

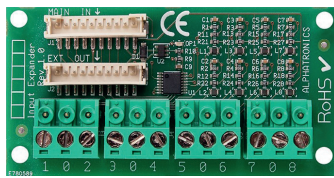
## UNii Modules

### FEATURES AND BENEFITS

- + Quick and easy installation
- + Expansion modules for UNii I/O module
- + Expansion & GPRS modules for UNii control panel

All expansion modules for inputs, open collector or relay outputs are universally constructed and can therefore be used in both the UNii control panel and the I/O module. With this you have a suitable solution for every situation and always have the right expansion board ready and prevents unnecessary stock of different components. Flexible set-up, expansion options, efficient and cost-saving for you as an installer!

#### Expansion board Control panel



art. code 004664



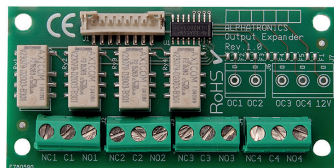
#### Expansion Board I/O



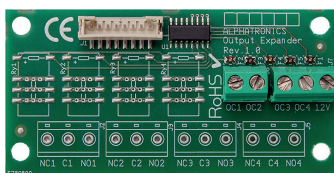
### UNii input expansion board

Multiple per control panel or I/O module

- 8 zones
- PCB board including flat cable
- Grade 3



art. code 004666



art. code 004668

### UNii output expansion board 4 relays

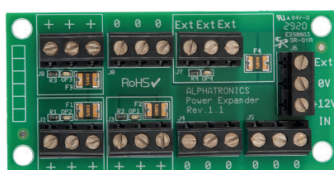
Maximum 1 per control panel or I/O

- 4 relay (12VDC) outputs, max. 30VDC / 2A
- PCB board including flat cable
- Grade 3

### UNii output expansion board 4 OC

Maximum 1 per centrale of I/O

- 4 open collector outputs (200 mA)
- PCB board including flat cable
- Grade 3



art. code 004669

### UNii power expander board

Multiple per control panel or I/O module

- For distribution / protection 12V power supply to detectors
- 9 terminals, 3 EXT terminals
- Per group of 3 own fuse of 500mA
- Can be stacked on an existing expansion board

Expansion board Control panel



Expansion Board I/O

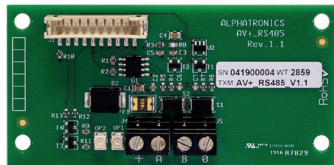


art. code 004665

## UNii GPRS plug-on board

Maximum 1 per control panel

- GPRS (backup) reporting to ARC (SIA DC09 or SEC IP)
- Including GSM antenna with 2m cable
- Grade 3



art. code 004663

## UNii RS-485 expansion module

Maximum 1 per control panel

- For expansion of a 2<sup>nd</sup> RS-485 bus
- For redundant RS-485 bus
- PCB board including flat cable
- Grade 3



art. code 004682

## UNii expander mounting kit

Multiple per control panel or I/O module

- To stack UNii expansion boards on top of each other
- Ability to stack a maximum of 2 boards
- Supplied including mounting studs and drill
- Can be applied to existing expansion boards

## Ordering Information

ART.NR.	DESCRIPTION
004600	UNii control panel 32 inputs
004602	UNii control panel 128 inputs
004604	UNii control panel 512 inputs
004660	UNii I / O module (incl. PSU) in cabinet
004662	UNii I / O module (excl. PSU) in cabinet
004664	UNii 8 inputs expansion board
004666	UNii expansion board output 4 Relay
004668	UNii expansion board output 4 OC
004669	UNii power expander board
004682	UNii expander mounting kit
004665	UNii GPRS plug-on board
004663	UNii RS-485 expansion board